

# THE SNOQUALMIE

14220 N. 62nd E. Avenue, Collinsville-Hollow Creek Neighborhood



SIMILAR HOME UNDER CONSTRUCTION-PLEASE CALL FOR PRICING INFORMATION

## Interior Features

- 3 bedrooms, study and 2 baths
- Gourmet kitchen offers slab granite counters, tiled backsplash, island with eating bar, stainless steel appliance package including a self cleaning gas range/oven, drop in ceramic sink and walk-in pantry with a jamb switch
- Light filled nook with tiled floors adjoins kitchen
- Living room features a 12 foot ceiling with box beam detailing and a brick gas fireplace
- Spacious master suite has his and hers walk-in closets with built-in organizers
- Beautiful master bath has a raised vanity, slab granite counters, jetted tub and a separate tiled shower with double shower heads and built-in bench
- Crown molding accents
- Oil rubbed bronze hardware
- Upgraded lighting package
- Hardwood and tile floors
- Plush carpeting
- Multiple ceiling fans
- Lighted art niche
- Arched entryways
- Easily accessible laundry room
- Hard wired carbon monoxide detector
- Wide pull down stairs for attic access

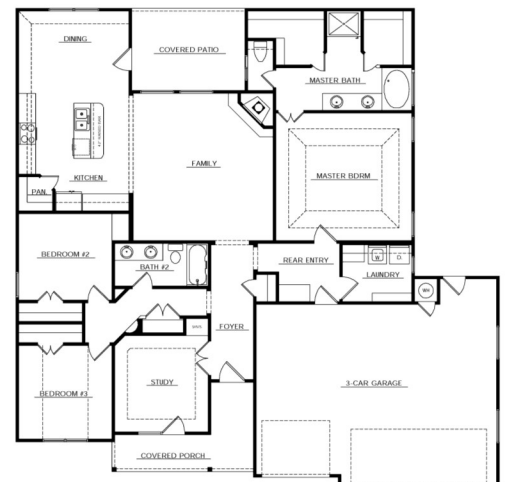
## Exterior Features

- Full brick exterior
- Covered front porch entry
- Large covered back patio wired and braced for ceiling fans
- Landscaped front and backyard
- Post tension slab foundation
- Solar board
- Oversized and insulated 3 car garage

## Neighborhood Features

- Just minutes to HWY 75 and HWY 20
- Collinsville School District
- Easy access to Bartlesville and downtown Tulsa

## Floor Plan



**Considering A  
Custom Home?**

Contact us for lot availability,  
floor plans and pricing

View online at:  
[www.winkleyhomes.com](http://www.winkleyhomes.com)

*For additional information please contact:*

**TRISTA SANDIN**

918-813-0074

tsandin@cctulsa.com [www.ccowasso.com](http://www.ccowasso.com)

